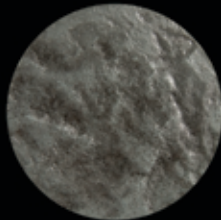
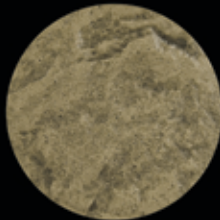


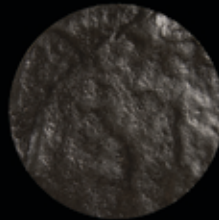
**Havana A-15**



**Blue Slate D-01**



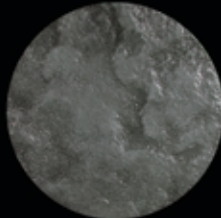
**Sand A-13**



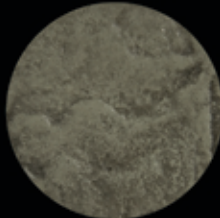
**Brown Stone A-12**



**Charcoal A-09**



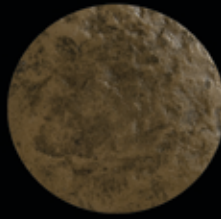
**Platinum A-07**



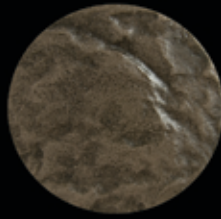
**Sage B-02**



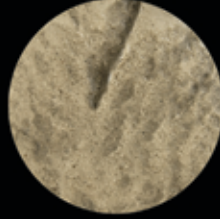
**Winter Gray C-04**



**Pecan Tan C-01**



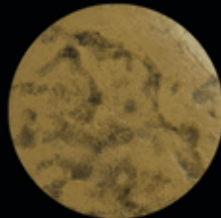
**Ashford A-02**



**Coquina C-06**



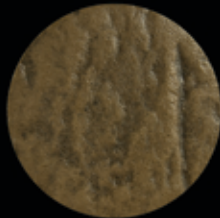
**Walnut A-05**



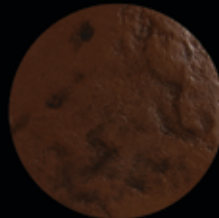
**Buckskin C-03**



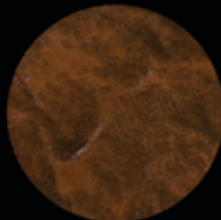
**Autum Brown A-03**



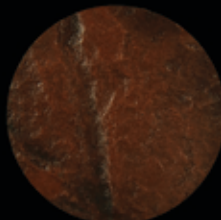
**Tumbleweed A-03**



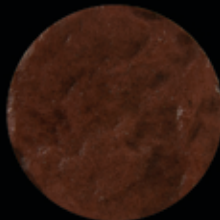
**Brick Red A-11**



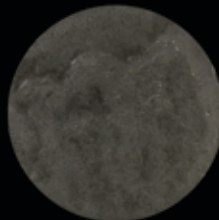
**Terra Cotta A-01**



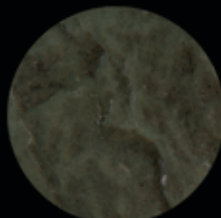
**Red River A-10**



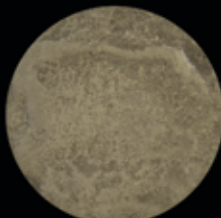
**Dark Cherry A-06**



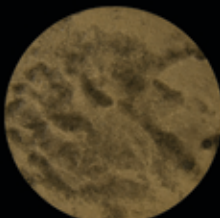
**Gray A-08**



**Slate B-01**



**Bone C-02**



**Beige A-14**



**Faded Rose C-05**

The colours on this card are reproduced as closely as possible to Concretion Colour Hardeners and are to be used only as a guide. The actual appearance may vary with job-site conditions, finishing techniques, use of sealers release agents and slight raw material colour drifts. Because of these differences which Concretion cannot control, it is highly recommended that a job-site mock-up sample be constructed for approval. Release agents are available in these colours and are intended as a surface highlighting product only and will not match colour chart exactly.